


FinTrailO

VIHTI-HELSINKI 21.-23.5.2022

Rasti-Vihti and Rasti-Jyry welcome You to FinTrailO 2022 event consisting of two Tempo and two PreO competitions, with PreO sprint as a bonus event.

Competition			
Program	Saturday 21.5., "leg 0"	14.00-	PreO-sprint (not part of FinTrailO)
	Saturday 21.5., leg 1	right after	TempO 1 (ECTO)
	Sunday 22.5., leg 2	11.00-	PreO 1 (WRE)
	Sunday 22.5., leg 3	15.30-	TempO 2
	Monday 23.5., leg 4	15.30- after	PreO 2 (ECTO) Price-giving ceremony
Locations	Saturday	Leg 0 and leg 1: Karkkila, near to Vuotinainen	
	Sunday	Leg 2: Helsinki, near to Käpylä Leg 3: Espoo, near to Ämmässuo	
	Monday	Leg 4: Vihti, near to Vihtijärvi	
			

Classes	<p>Elit, A, B, D/H12 A and D/H12 B.</p> <p>On leg 1 (Tempo1) ECTO-points are counted in Elit-, A-class and DH12A-class.</p> <p>On leg 2 (PreO1) WRE-points are counted in Elit-class only.</p> <p>On leg 4 (PreO2) ECTO-points are counted in Elit-class only.</p>
Maps	<p>Sprint maps, ISSprOM 2019-2, made or refined for TrailO.</p> <p>Scale 1:3000 in leg0, leg1, leg3, leg4</p> <p>Scale 1:4000 in leg 2</p> <p>Equidistance 2m</p>
Terrain and distances	<p>Saturday 21.5. PreO Sprint and Tempo 1: low hills, a lot of 1-3 m stones, mostly spruce forests. In sprint a nice gravel road, in tempo a road with rough surface. Walk distances: From parking to CC 100-600 m, CC to sprint start max 200 m, sprint 400 m, transition to tempo 500 m, tempo course 500 m, walk from finish to CC 1300 m.</p> <p>Sunday 22.5. PreO 1: mainly rocky hills and forest. Roads are smooth gravel or asphalt. Walk distances: Courses from 1300m to 1700m + 200m from the Competition centre to the Start and 500m from Finish to timed controls and the Competition centre.</p> <p>Sunday 22.5. Tempo 2: relatively flat hills with some bare rock and minor cliffs. Gravel road. From parking to CC 0-500 m, CC to start 100 m, tempo course 500 m, walk back through the course. Due to scarce parking possibilities please leave the area quickly.</p> <p>Monday 23.5. PreO 2: pinewood with very good visibility, some kettles and other contour forms. Gravel roads. Parking to CC 0-600 m, CC to start 400 m, courses 750 m, from finish to timed control and back to CC 1700 m.</p>
Time-keeping and punching	<p>In class E time-keeping and punching by TOE-system. Manual punching with own puncher as a backup. Paper card is read only if a punch is missing from the competitor's chip. In the sprint the backup punching grid is attached to the competition map.</p> <p>In classes A, DH12A, B and DH12B punching manually with own puncher.</p>
Personal helper	<p>Athletes who need help during the competitions shall bring their own helper.</p>
Training Training for ETOC	<p>There will be a model station on Saturday and Sunday morning.</p> <p>Tempo training is arranged by Petteri Hakala and Janne Seppälä in Kirkkonummi on Tuesday 24th at 5 PM. Parking in address Vanha Rantatie 8. Fee optional, participants work on stations.</p>

Overall results and prizes	<p>FinTrailO multi-day competition's results are counted of two TempO and two PreO competitions' results so that three best scores of four events are counted for each participant. The athlete with the highest combined result from three competitions will win FinTrailO.</p> <p>Prizes for at least 3 best competitors in Elite and DH 12 A, lottery prizes in other classes.</p> <p>The PreO Sprint has separate prizes.</p>
Marshall	<p>If you are willing to help organisers by working one event as marshall on a timed control, please contact us via email fintrailo2022@kulkine.net . All marshalls can participate in the competition.</p>

Information	
Registration	<p>Entry deadline Sunday 15th of May 23.59.</p> <p>Foreign participants enter WRE-competition via IOF Eventor and other competitions with FinTrailO 2022 Registration Form. Please make sure that you have an IOF ID. Finns enter via national IRMA-system.</p> <p>Please contact us via email fintrailo2022@kulkine.net if you need an invitation for your VISA.</p>
Late entries	<p>Late entry deadline Thursday 19th of May 23.59. Additional late entry fee 50%. Late entries will be add to the end of the start list.</p>
Additional request of participant information	<p>All participants are kindly asked to provide following information with FinTrailO 2022 Information Form latest 15.5.</p> <p>1) In whose car you will be travelling to the competitions? We will try to organise the start list so that the passengers in the same car get start times within a reasonable time slot.</p> <p>2) If you have a physically challenged -certificate to get alternative maximum time in PreO competitions.</p>
Entry fee	<p><i>PreO-sprint</i> Elit 15€ Others 10€</p> <p><i>Legs 1, 3 and 4</i> Elit 20€ A and B 15€ D/H12 A and B 10€</p> <p><i>Leg 2</i> Elit 23€ (WRE) A and B 15€</p>

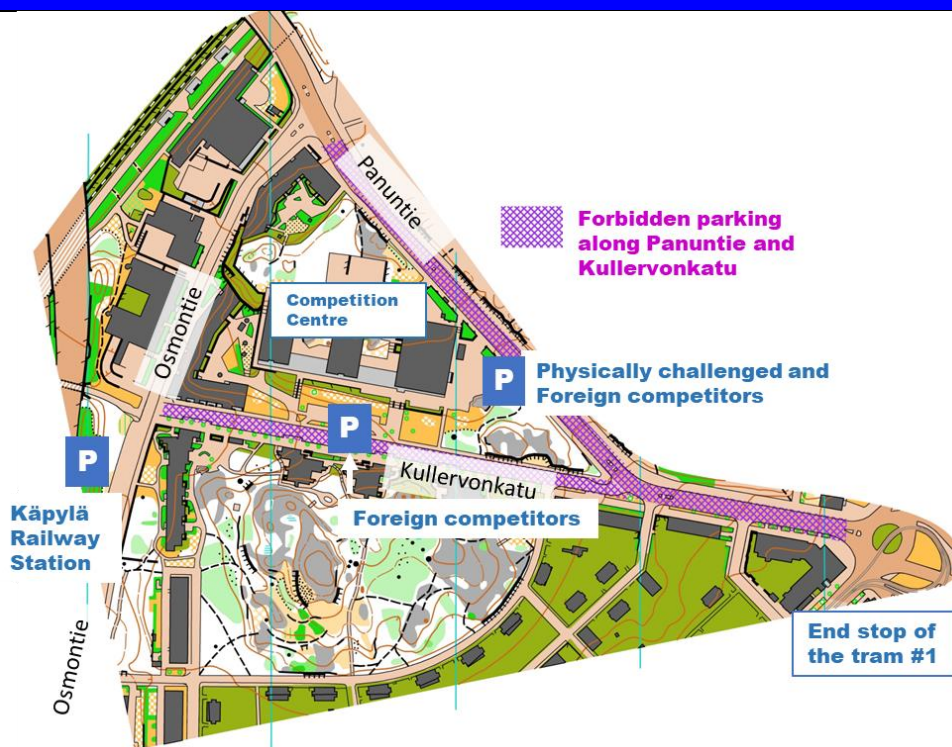
	<p>D/H12 A and B 10€</p> <p>Thus, the total fee in Elit is 98€ for FinTrailO and sprint.</p> <p>The total fee for international athletes should be paid before the competitions to the bank account of Helsingin Jyry: FI6112203000279113, BIC NDEAFIHH. Banking system may require the address of Helsingin Jyry: Viides linja 3, 00530 Helsinki, Finland.</p> <p>All additional costs from international payment must be covered by the athlete.</p> <p>Finnish licensed participants shall pay their entry fees through IRMA.</p>
Toilet	There will be wheelchair accessible toilets.
Food	There will be a canteen at the competition center for legs 1,2 and 4.
Accommodation	See alternatives at the ETOC web site (https://etoc2022.com/).
Transport	Useful public transport doesn't exist for all events.
Parking	<p>On Saturday legs 0-1 in Karkkila: Along the road.</p> <p>On Sunday leg2 in Helsinki: Please follow the attached parking instructions and map.</p> <p>On Sunday leg 3 in Espoo: Small parking area, please do not stay for aftermath.</p> <p>On Monday leg 4 in Vihti: First 30-40 cars in CC, then some spaces by the road and then another parking area approx. 600 m from CC.</p>
Entry to Finland	<p>We refer to the Government sites for updated information: https://valtioneuvosto.fi/en/information-on-coronavirus/current-restrictions/travel-to-and-from-finland</p> <p>Please contact us via email if you need an invitation for your VISA.</p>

Event directors	<p>Legs 0-1 and 3-4, Rasti-Vihti: Sini Aartomaa, sini.aartomaa@honkamaja.fi</p> <p>Leg 2: Rasti-Jyry: Aino Leppänen, aino.leppanen@gmail.com</p>
Course setters	<p>Legs 0-1 and 3-4 Rasti-Vihti: Janne Seppälä</p> <p>Leg 2 Rasti-Jyry: Eero Hakanen</p>
Event advisers	<p>Legs 0-1 and 3-4 Juha Hiirsalmi</p> <p>Leg 2 Ari Tertsunen</p>
Jury	Anne Straube, Ari Uotila and Tuomo Markelin
Inquiries	Please contact us via email fintrailo2022@kulkine.net
Web page	https://kulkine.net/fintrailo2022/
Facebook	https://Facebook.com/FinTrailO

Welcome to FINTRAILO 2022!

Parking

Sunday 22.5.
Helsinki
PreO1, leg2



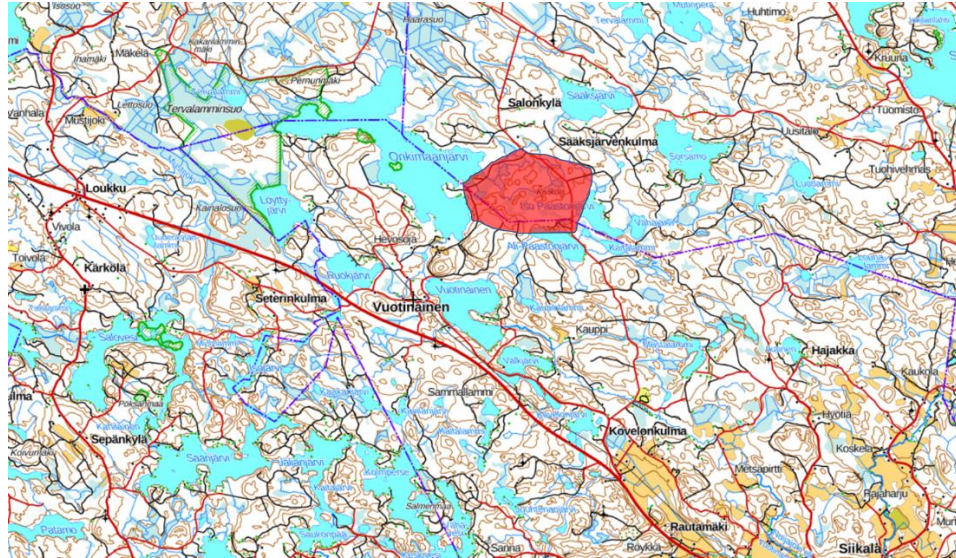
Competition Centre address: Kullervonkatu 11 Helsinki (Käpylä)

Parking East side of the competition centre is reserved for physically challenged persons and foreign participants, entry from Panuntie. Another parking place South of the Competition Centre is reserved for foreign participants, entry from Osmontie-Kullervonkatu. Finns are advised to use the parking place of Käpylä railway station and street parking along Osmontie near the railway station.

Street parking along the Panuntie North-East of the competition centre is forbidden in the spirit of fair play because of the visibility to some controls. Parking is forbidden along Kullervonkatu South of the Competition Centre, it is reserved for local residents with traffic signs.

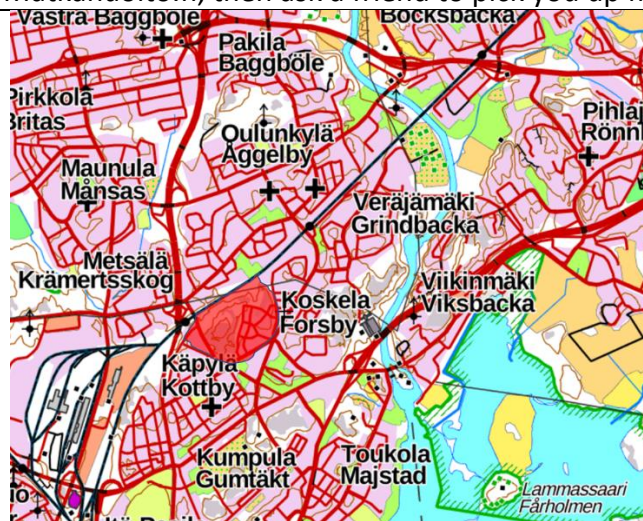
Embargoed areas

Saturday 21.5.
Karkkila,
Vuotinainen
PreO Sprint
TempO 1, leg 1



Public transportation: some buses from Helsinki to Karkkila, see Matkahuolto.fi, then ask a friend to pick you up from there.

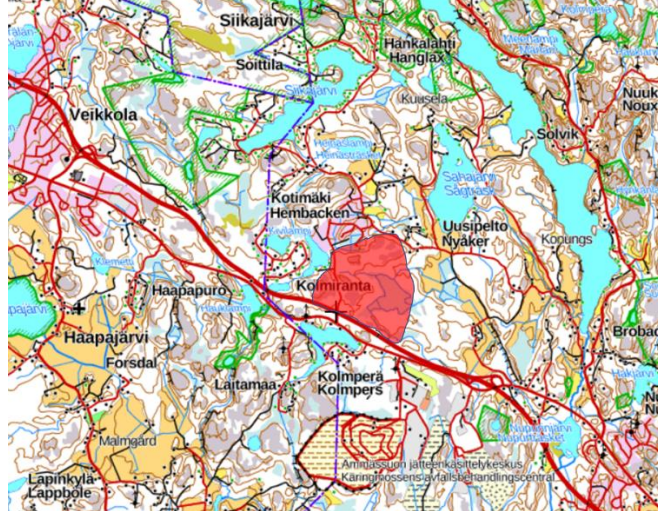
Sunday 22.5.
Helsinki
PreO 1, leg 2



Public transportation

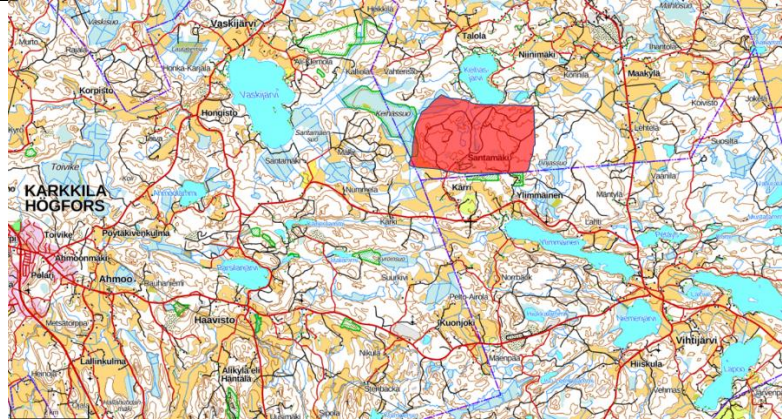
- Tram #1, Final stop at the crossing of Pohjolankatu and Kullervonkatu
- K-train from Helsinki to Käpylä station

Sunday 22.5.
Espoo
TempO 2, leg 3



Public transportation: With train to Espoon keskus, and from there the Bus 243 to Kolmperä.

Monday 23.5.
Vihti, Vihtijärvi
PreO 2, leg 4



Some buses from Helsinki to Loppi via Vihtijärvi, see Matkahuolto.fi.